

Injection system Multifix USF Winter



Included in delivery

- 1 mortar cartridge
- 1 mixing nozzle

Cross references

- Anchor rod
- Mesh sleeve
- Cleaning brush
- Blow-out pump
- Applicator gun
- Hammer drill SDS plus
- Duster Expert SDS plus
- Cordless hammer drill



Watch the video now:
<https://www.youtube.com/watch?v=SZ74JAt5Apc>

Application range

- > For installation in cracked concrete (option 1) and non-cracked concrete (option 7) (ETA-16/0107)
- > For installation in masonry (ETA-16/0089)
- > For installation in natural stone (without approval)
- > Approved for anchor rods M8, M10, M12, M16, M20, M24, M27, M30

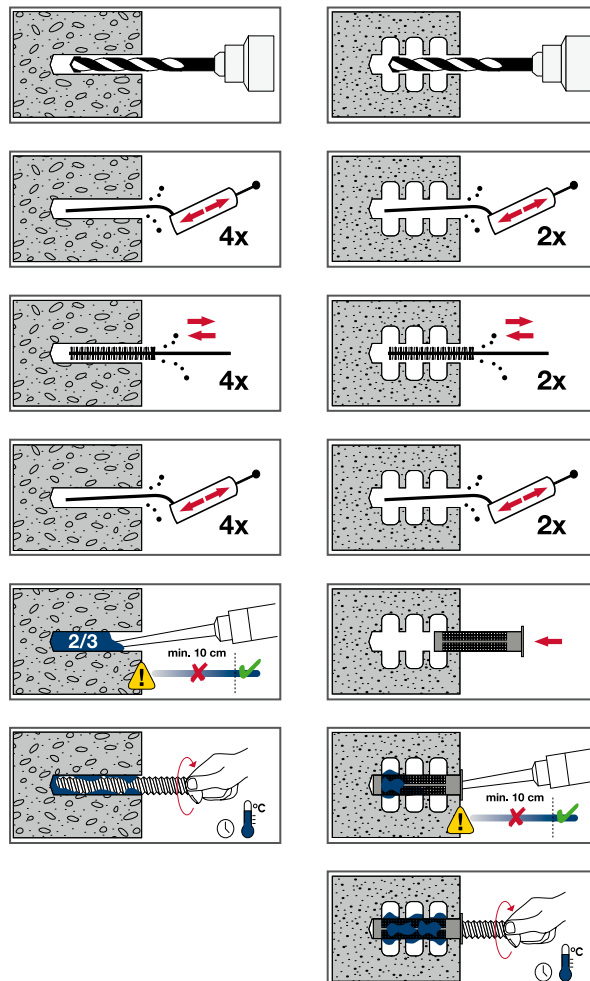
Properties

- > Vinyl resin, styrene-free
- > Cartridge temperature may conform to the low outside temperature
- > Shorter curing times at low temperatures
- > Can be used in wet concrete and water-filled drill holes

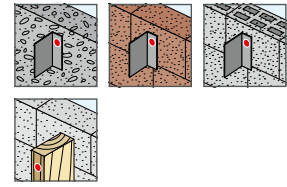
Note

Please observe the corresponding approvals during planning and processing.

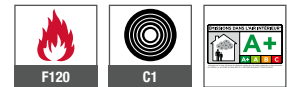
The storage temperature must not permanently exceed 25 °C! Please store upright!



Applications



Technical specifications

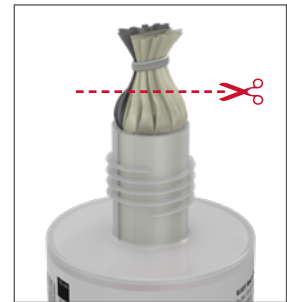


Certifications

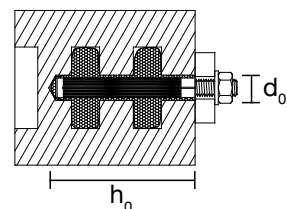
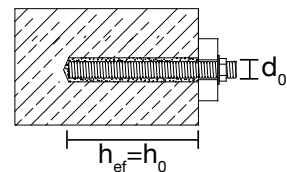


Base materials

- Approved for
- > Cracked concrete
 - > Non-cracked concrete
 - > Masonry



Note:
 Plastic bag must be cut open before processing!





Installation parameters			
Anchor rod	d_0 [mm]	$h_{ef} = h_0$ min-max [mm]	T_{inst} concrete ≤ [Nm]
M8	10	60–160	10
M10	12	60–200	20
M12	14	70–240	40
M16	18	80–320	80
M20	24	90–400	120
M24	28	96–480	160
M27	32	108–540	180
M30	35	120–600	200

Consumption in solid building materials			
Anchor rod	d_0 [mm]	h_0 [mm]	Number of fills
M8x130	10	80	44
M10x130	12	90	27
M10x170	12	130	19
M12x160	14	110	16
M16x190	18	125	9

Values are only for orientation

Installation parameters			
Ambient temperature [°C]	Processing time	Curing time in dry weather	Curing time in wet weather
-20*	1h 15'	24h	48h
≥ -15	55'	16h	32h
≥ -10	35'	10h	20h
≥ -5	20'	5h	10h
≥ 0	10'	2h 30'	5h
≥ +5	6'	1h 20'	2h 40'
10	6'	1h	2h

*Min. cartridge temperature -20 °C

Consumption in perforated building materials				
Mesh sleeve	Anchor rod	d_0 [mm]	h_0 [mm]	Number of fills
USF 12x80	M8	12	85	17
USF 16x85	M8/M10	16	90	11
USF 16x130	M8/M10	16	135	6
USF 20x85	M12/M16	20	90	6
USF 20x130	M12/M16	20	135	4
USF 20x200	M12/M16	20	205	2

Values are only for orientation

Product online



Order description	Content [ml]	PU [pieces]	Price/1 [EUR]	Article number	EAN
Mortar cartridge USF winter 300 ml 12VE	300	1		9571000300	4061245010540
Mixing nozzle USF	–	1		9570040141	4061245061900
Mixing extension 500 mm		1		8682900004	4061245081106

Order information: 2 mixing nozzles are included with each cartridge.