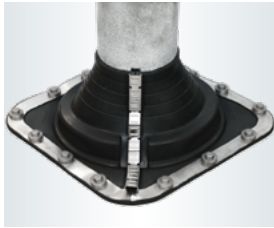


DEKTITE® Combo Set



Cross references

Hose clamp
Tightener
Joint sealant

Application range

- > For waterproofing pipes on corrugated metal or fibre cement roofs
- > For subsequent waterproofing of pipes

Properties

- > Version EDPM (black)
- > Temperature resistance EPDM (black or grey) permanent 50 °C to +115 °C, short-term up to +150 °C
- > Temperature resistance silikone (red) permanent 50 °C to +200 °C, short-term up to +250 °C

Included in delivery

- 1 pipe flashing
- 1 cartridge of EJOPLAST joint sealant
- 1 self-drilling screw set - optionally folding blind rivet set
- 1 clips set

Benefits

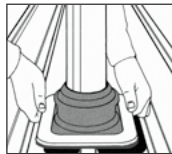
- > Perfect seal on roof and facade
- > No interference of thermal elongation of pipes
- > No fatigue fractures
- > Ideal for repairs of existing pipe systems
- > 20-year warranty on material

Note

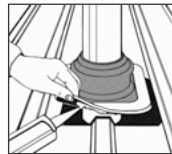
Use folding blind rivets for fibre cement boards.
Profile height max. 45 mm.



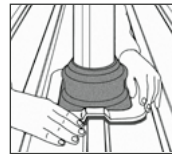
1. Adjust DEKTITE® to the pipe.



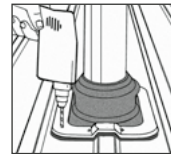
2. Adjust DEKTITE® to the profiled sheet and mark.



3. Apply sealant.



4. Adjust DEKTITE® to the shape of the profiled sheet.



5. Fasten DEKTITE® with self-drilling screws or folding blind rivets.

Product online



| Order description | For pipe diameter [mm] | Base [mm] | Roof pitch [°] | Content Cartridge [ml] | Content screw [pieces] | PU [set] | Price/1 [EUR] | Article number | EAN |
|-------------------|------------------------|-------------|----------------|------------------------|------------------------|----------|---------------|----------------|---------------|
| DC 101 B (black) | 5–60 | 139 x 139 | 0–40 | 80 | 8 | 1 | | 8201104704 | 4061245046846 |
| DC 103 B | 5–127 | 218 x 218 | 0–40 | 80 | 16 | 1 | | 8201304704 | 4061245046853 |
| DC 104 B | 75–175 | 285 x 285 | 0–40 | 80 | 20 | 1 | | 8201404704 | 4061245046860 |
| DC 106 B | 125–230 | 365 x 365 | 0–40 | 80 | 28 | 1 | | 8220304704 | 4061245046877 |
| DC 107 B | 150–280 | 454 x 454 | 0–40 | 310 | 32 | 1 | | 8230304704 | 4061245046884 |
| DC 109 B | 240–503 | 685 x 685 | 0–40 | 310 | 40 | 1 | | 8250304704 | 4061245046891 |
| DC 110 B | 350–760 | 1000 x 1040 | * | 310 | 70/10 | 1 | | 8270004704 | 4061245013572 |

*350–500 mm cut: maximum 30°; 500–760 mm cut: maximum 15°

Order information: All versions also available in grey (EPDM) and red (silicone) Further lengths upon request.